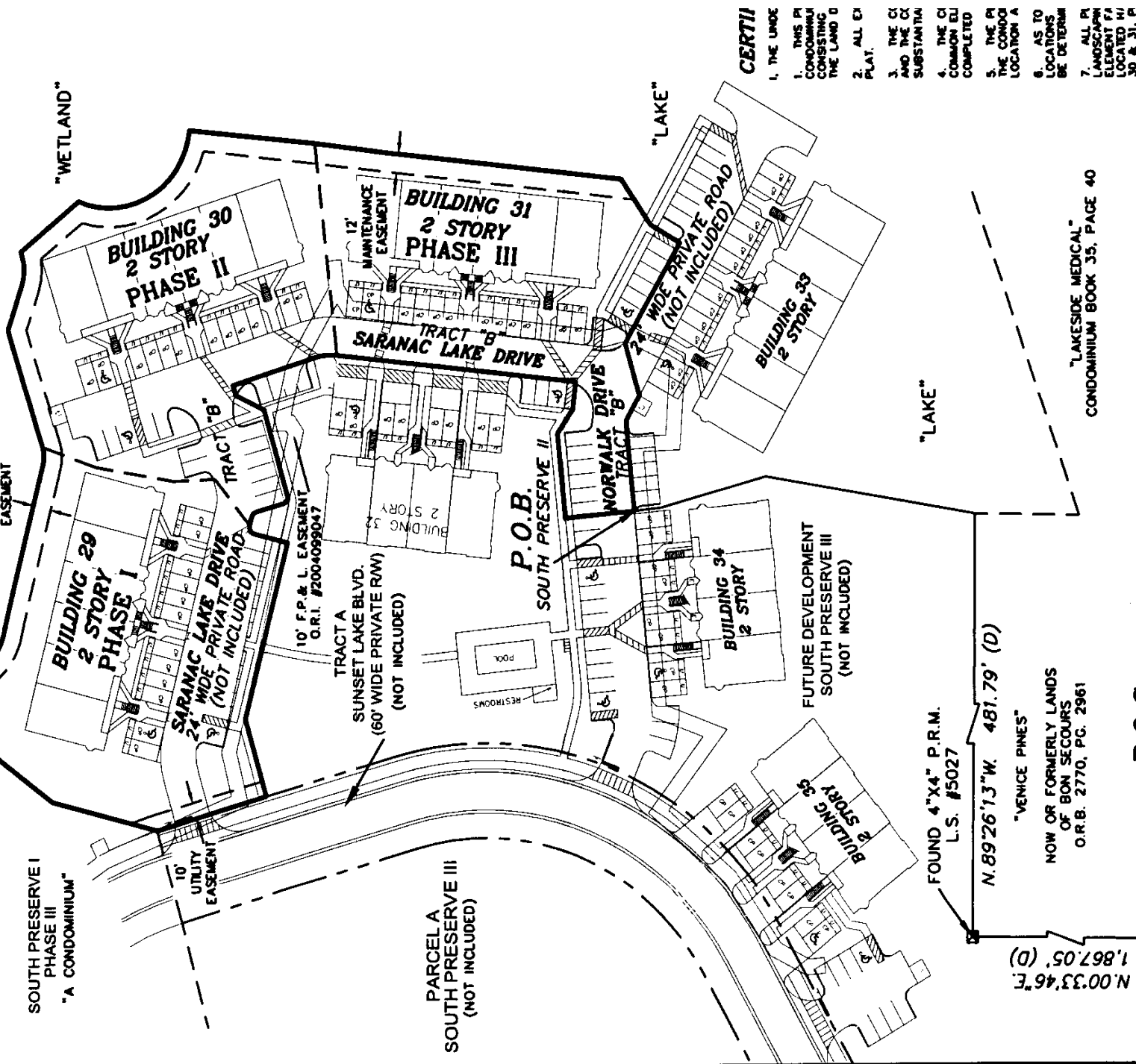


**SOUTH PRESERVE I
AT WATERSIDE V
A CONDOMINIUM**

LYING IN A PORTION (SECTION 15, TOWNSHIP 39 SOUTH, RANGE 19 EAST) SARASOTA COUNTY, FLO



- CERTII**
1. THE UNDE
 1. THIS P CONDOMINIUM CONSISTING OF THE LAND O
 2. ALL EX PLAT.
 3. THE CI AND THE CI SUBSTANTIA
 4. THE CI COMMON EL COMPLETED
 5. THE P THE CONDO LOCATOR A
 6. AS TO LOCATIONS BE DETERM
 7. ALL P LANDSCAPING ELEMENT F LOCATED W/ 30 & 31, P

"LAKESIDE MEDICAL" CONDOMINIUM BOOK 35, PAGE 40

"VENICE PINES"
NOW OR FORMERLY LANDS
OF BON SECOURS
O.R.B. 2770, PG. 2961

P.O.C.

THE SOUTHWEST CORNER
OF THE EAST HALF OF

SECTION 15, TOWNSHIP 39 SOUTH, RANGE 19 EAST
FOUND 5/8" IRON ROD L.S. #3979

N.00°33'46"E
1,867.05' (D)
N.89°26'13"W 481.79' (D)
FOUND 4"x4" P.R.M.
L.S. #5027